

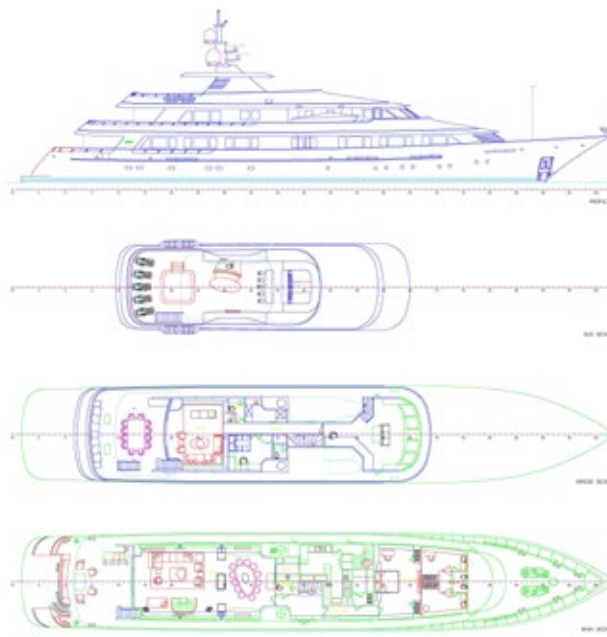


SCHOTTEN & HANSEN | YACHT BROADWATER
Wooden surfaces on board: elegant, light and solid

**Schotten
& Hansen**

YACHT

Room	Area	Volume
Deck	100	100
Living	100	100
Bedroom	100	100
Bathroom	100	100
Kitchen	100	100
Garage	100	100
Storage	100	100
Engine	100	100
Electrical	100	100
Plumbing	100	100
Structural	100	100
Interior	100	100
Exterior	100	100
Deck	100	100
Living	100	100
Bedroom	100	100
Bathroom	100	100
Kitchen	100	100
Garage	100	100
Storage	100	100
Engine	100	100
Electrical	100	100
Plumbing	100	100
Structural	100	100
Interior	100	100
Exterior	100	100



Schotten & Hansen on board: Refit of the Broadwater in 2020

During the conversion of the more than twenty-year-old motor yacht the company delivered consulting, planning and implementation skills to the highest level, in addition to the manufactory products.

Challenges:

- New design concept
- No old plans available, so no data
- Coordination of shipyard, designers, owners and producers.

Solutions:

- Product development according to existing design concept (wood selection, colour development with the designer or shipyard)
- Acquisition of data of the yacht interior for construction planning (digital measurement)
- Prefabrication and -assembly as well as acceptance in Peiting
- Logistics in cooperation with the shipyard
- Crew training for cleaning and maintenance





Product finding to match the design concept

For the 2020 refit of the Broadwater, Schotten & Hansen manufactured floors and steps from the finest oak wood.

The colour and texture of the natural material was matched to the concept of the American designer Adam Voorhees.

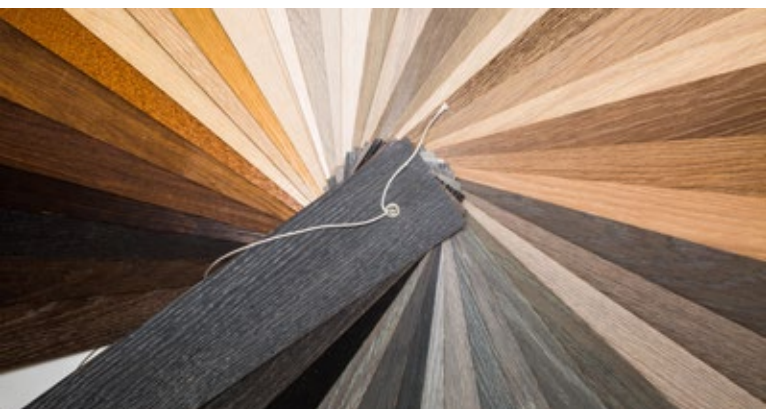
The light-coloured floor harmonises with the other woods (black walnut and smoked eucalyptus) as well as the bronzed details and tactile textiles of leather, cashmere, silk and wool.

For the wood selection, the designer and employees of the Royal Huisman shipyard sat down together with the Schotten & Hansen yacht team. After extensive sample testing, the choice was made: European oak in a fine rift grade and textured in the surface finish.

In order to lay the planks in a varied yet balanced pattern, falling lengths and widths were ordered. This means that the individual elements are of different lengths and widths. This selection also has the advantage that there is less waste and the whole tree is used for processing. An important aspect in terms of sustainability.



Floor and steps made of European oak in a fine rift grading, textured and in a colour shade specially developed according to the designer's specifications



Schotten & Hansen relies on natural colour tones, which are produced in the wood itself with the help of natural pigments.



Natural colours individually created

The colour shade was specially developed with the designer to match the existing colour concept. For this purpose the wood's own ingredients were activated and the finest pigments worked into the pores. In this way, the surface retains the properties of natural wood and is not sealed, as is the case with an application of lacquer paint.

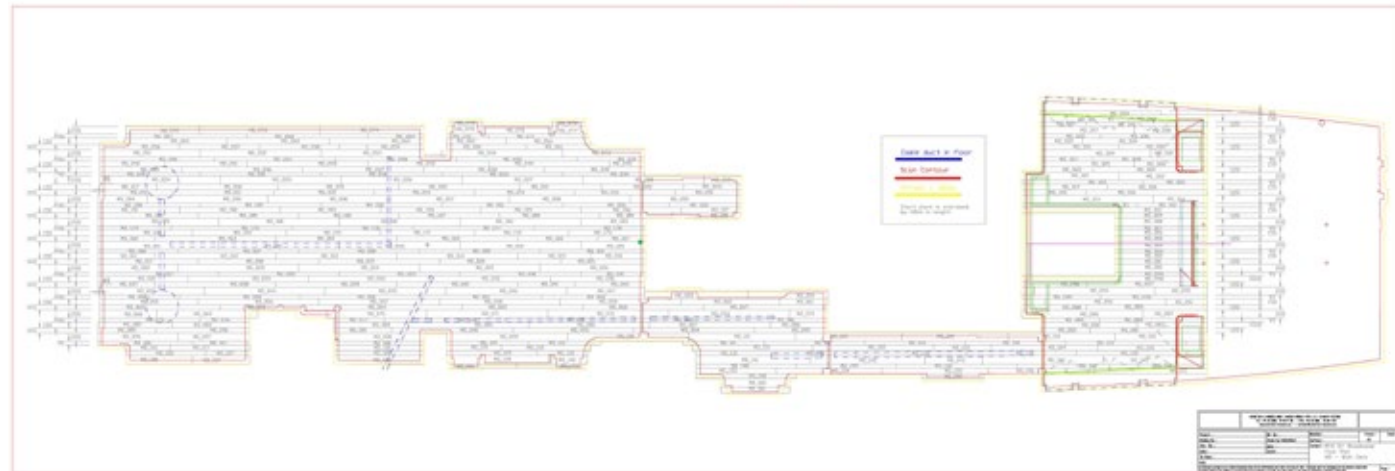
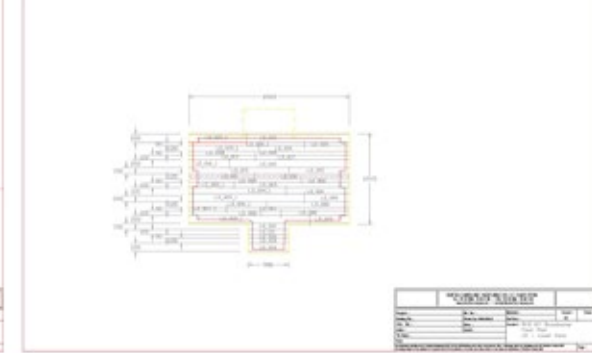
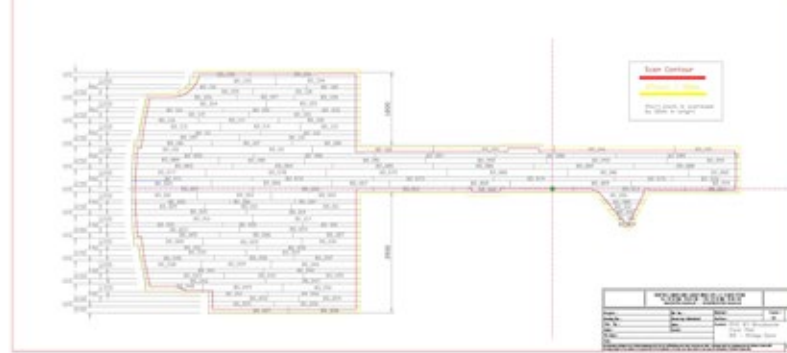
The wood can continue to breathe, absorb moisture and release it again.

The basis for this is a natural protection made of resins, waxes and oils developed in the in-house laboratory especially for the manufactory products. This makes the surface water-repellent and also creates a healthy living atmosphere.

Even at sea and under climatic fluctuations, this is the optimal prerequisite for robustness, durability and a healthy indoor climate.



A 3D scan of the gutted ship's hull provides the data for precise planning of the floor installation.



3D scan for detailed plans

The challenge was to work from a line in the middle of the nave in alternating plank dimensions towards the wall. The individual planks on the wall were not to be too short. To match the floor, there are also steps running across two decks.

It is necessary to produce a detailed drawing beforehand, so that the individual boards can be laid accurately in the ship.

Since no old plans were available, the data had to be collected at the Dutch shipyard after the Broadwater was completely gutted.

A 3D scanner took measurements, after which the floor plans were drawn up. With these, the required wood could be calculated and a laying plan created.



Optimum use of space through customisation

Every square centimetre of space is used when fitting out the interior of a yacht. Accurate fitting plays an enormous role because reworking and adjusting on site is no longer possible.

To ensure that everything fitted in the end, the elements were laid out in the Peitingen

factory for inspection after the precise manufacturing process, just as they were to be installed on the yacht.

Only after they had passed quality control were they transported to the Royal Huisman shipyard.

This ensured that the on-site assembly was carried out quickly by an expert team. The prefabricated elements saved the shipyard valuable time for the interior fitting.



Consistency through an individual service concept

When used on the high seas, salt water and the constant use can leave traces of wear and tear on the wooden surfaces. For this reason, the crew was advised by Schotten & Hansen on the ongoing care of the floors and interior. It will also be looked after in the future.

Should the surface be affected by stains or mechanical damage, it can be regenerated and rebuilt by the Schotten & Hansen service team.

During service visits, the wood surface is refinished and damage that cannot be removed with ordinary cleaning is repaired.

The tasks of the Schotten & Hansen service team include, for example, a general touch-up, colour adjustments and changes as well as the removal of stains or the repair of veneers. With a polish, the surfaces are sustainably protected again.

The surface is never sanded down, however, because it can be regenerated. The homogeneous and high-quality patina that develops on the wood over the years is thus preserved.

A service visit takes place in any harbour where the yacht stops.





FACTSHEET

Project	Yacht Broadwater
Completion	Refit 2020 (built 1994 Rasselas, Feadship)
Shipyard	Royal Huisman Shipyard/Huisfit, Netherlands
Refit Management	MCM, USA
Exterior and interior design	De Voogt, Adam Voorhees Design, USA
Wooden surfaces	Schotten & Hansen, Peiting (DE) approx. 220 m ² floor and steps (oak fine grade Rift, textured finish, falling lengths and widths, special colour)
Picture credits	© Onne van der Wal; Schotten & Hansen GmbH

Broadwater won the Neptune Award for best refit of 2021 at the World Superyacht Awards

SCHOTTEN & HANSEN in the YACHT Broadwater

Royal Huisman and the Broadwater

The Royal Huisman shipyard, based in Vollenhove (Netherlands), has decades of experience in the manufacture of racing and luxury superyachts. The shipyard has been anchored in boatbuilding since the company was founded in 1884. The initial portfolio of wooden and working boats expanded in 1954 with yacht construction in steel and aluminium. To this day, nearly 300 employees build and renovate large, internationally award-winning yachts.

With Broadwater, the shipyard undertook the refit of a 56-metre motor yacht. Among the many cosmetic changes on board are the new classic blue hull, custom composite hardtop and all-white paint. The stern was extended to accommodate a bathing platform, as expected of any superyacht today. The main cabin was completely refitted, retaining some of the raised panelling and joinery. The entire interior was given a fresh, modern look. A Hi-Fog system was installed throughout the vessel, fireproof barriers were added and a new smoke alarm system and emergency generator were fitted. The yacht can accommodate up to 12 guests and a crew of 13.

For further information please contact:

Schotten & Hansen GmbH
August-Moralt-Str. 1-3 | 86971 Peiting | Germany
T +49 8861 90 80 40 | kontakt@schotten-hansen.com
www.schotten-hansen.com

**Schotten
& Hansen**

The Schotten & Hansen GmbH

Through combining traditional craftsmanship with modern technology, healthy living products are manufactured individually for customers with great care and the highest quality standards at the Schotten & Hansen manufactory; floorboards, parquet and complementary products such as steps, veneers for doors, walls, ceilings or micro-perforated acoustic elements. Care products developed in the in-house laboratory and comprehensive services ensure a long life for the manufactured goods.

All product solutions are finished with natural resins, waxes and oils. They are used in private homes as well as in the hotel industry, in public spaces and yacht builds. With our regional roots, we realise a wide range of projects worldwide in close cooperation with an international network of architects, designers, craftsmen and suppliers.

Over the past four decades, the company has grown from a small business that originally restored historical furniture and its surfaces to one of the most internationally-renowned specialists in wooden floors and interiors. The manufactory employs 150 people and has a production area of 15,000 m².

Since 2010, the manufactory has realised over twenty yacht projects such as the Twizzle, Salperton, Pumula or the G2.